

**LEGEND**

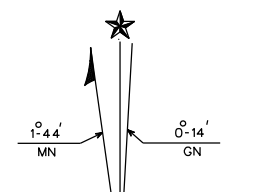
- |   |   |  |
|---|---|--|
| <p><b>ROADS AND ROADWAY FEATURES</b></p> <ul style="list-style-type: none"> <li>PRIVATE/NOT MAINTAINED ROAD</li> <li>COUNTY MAINTAINED DIET ROAD</li> <li>2 LANE PAVED STATE ROUTE</li> <li>4 LANE DIVIDED STATE ROUTE</li> <li>4 LANE UNDIVIDED STATE ROUTE</li> <li>COUNTY MAINTAINED PAVED ROADS</li> <li>OTHER 4 LANE DIVIDED PAVED ROAD</li> <li>OTHER 4 LANE UNDIVIDED PAVED ROAD</li> <li>COUNTY MAINTAINED STREETS</li> <li>CITY STREETS</li> <li>INTERCHANGE</li> </ul> <p><b>ROAD SYSTEM DESIGNATION</b></p> <ul style="list-style-type: none"> <li>INTERSTATE HIGHWAY SYSTEM</li> <li>U.S. NUMBERED SYSTEM</li> <li>STATE HIGHWAY SYSTEM</li> <li>COUNTY ROAD NUMBER</li> <li>PRIVATE/NOT MAINTAINED NUMBER</li> </ul> <p><b>NAVIGATION</b></p> <ul style="list-style-type: none"> <li>DOCK, PIER OR LANDING</li> <li>FERRY (FF, FREE FF, TOLL)</li> <li>LIGHT - NAUTICAL</li> <li>LIGHTHOUSE</li> <li>NAVIGABLE STREAM</li> <li>NAVIGABLE STREAM-LOCK AND DAM</li> <li>LEVEE</li> </ul> <p><b>CITY AND VILLAGE CENTERS</b></p> <ul style="list-style-type: none"> <li>STATE CAPITOL</li> <li>COUNTY SEAT</li> <li>OTHER TOWNS AND VILLAGES</li> <li>INCORPORATED CITY OR TOWN</li> </ul> <p><b>MISCELLANEOUS STRUCTURES</b></p> <ul style="list-style-type: none"> <li>DAM WITH ROAD</li> <li>HIGHWAY TUNNEL</li> <li>CAUSEWAY</li> <li>MISDRAINAGE STRUCTURE</li> <li>FORD ROAD ESTABLISHED</li> <li>CATTLE GUARD</li> <li>GATE ACROSS ROAD</li> </ul> | <p><b>RAILROADS</b></p> <ul style="list-style-type: none"> <li>RAILROADS IN JUNCTATION</li> <li>RAILROAD STATION</li> <li>GRADE CROSSING</li> <li>RAILROAD ABOVE</li> <li>RAILROAD BELOW</li> <li>RAILROAD BRIDGE</li> <li>RAILROAD TUNNEL</li> <li>ABANDONED RAILROAD</li> </ul> <p><b>HIGHWAY BRIDGES</b></p> <ul style="list-style-type: none"> <li>STATE MAINTAIN BRIDGE</li> <li>COUNTY MAINTAIN BRIDGE</li> <li>COUNTY MAINTAIN BRIDGE CULVERT</li> <li>COUNTY MAINTAIN BRIDGE UNDER 20'</li> </ul> <p><b>AIRPORTS</b></p> <ul style="list-style-type: none"> <li>AIRPORT-GENERAL</li> <li>MILITARY AIRFIELD</li> <li>AIRPORT-COMPLET FACILITIES</li> <li>AIRPORT-LIMITED FACILITIES</li> <li>HELIPORT</li> <li>LANDING AREA OR STRIP</li> </ul> <p><b>INDUSTRIAL</b></p> <ul style="list-style-type: none"> <li>INDUSTRIAL PARK</li> <li>MINE SHAFT OR DRIFT</li> <li>MINE OPENING</li> <li>OIL OR GAS WELL</li> <li>STORAGE TANK</li> <li>PUMPING STATION OIL OR GAS</li> <li>GAUGING OR PUMPING STATION</li> </ul> <p><b>DRAINAGE AND NATURAL FEATURES</b></p> <ul style="list-style-type: none"> <li>INTERMITTENT STREAM</li> <li>NARROW STREAM</li> <li>WIDE STREAM DAM</li> <li>LAKE, RESERVOIR OR POND</li> <li>MARSH OR SWAMP</li> <li>OVERFLOW LAND</li> <li>MOUNTAIN RANGE</li> <li>SINK</li> </ul> | <p><b>PUBLIC SERVICE FACILITIES</b></p> <ul style="list-style-type: none"> <li>COURTHOUSE</li> <li>POST OFFICE</li> <li>WATER TANK OR STAND PIPE</li> <li>PIPE LINE-GAS</li> <li>PIPE LINE-OIL</li> <li>TRANSMISSION LINE</li> <li>POWER PLANT</li> <li>RAILROAD SUB-STATION</li> <li>UNDERGROUND TELEPHONE CABLE</li> <li>RADIO OR TELEVISION STATION</li> <li>HIGHWAY GARAGE</li> <li>HIGHWAY DEPARTMENT OFFICE</li> <li>RADIO, MICROWAVE TOWER, ETC.</li> <li>POLICE OR SHERIFF STATION</li> <li>STATE TROOPER HEADQUARTERS</li> <li>BOOSTER STATION</li> <li>FIRE STATION</li> </ul> <p><b>CHURCHES, CEMETERIES, ETC.</b></p> <ul style="list-style-type: none"> <li>CHURCH</li> <li>CHURCH AND SCHOOL</li> <li>CEMETERY</li> <li>CHURCH AND CEMETERY</li> <li>NURSING OR REST HOME</li> <li>HOSPITAL</li> </ul> <p><b>EDUCATIONAL AND CORRECTIONAL</b></p> <ul style="list-style-type: none"> <li>SCHOOLHOUSE</li> <li>OTHER EDUCATIONAL INSTITUTIONS</li> <li>TOWN HALL OR COMMUNITY CENTER</li> <li>AGRICULTURAL EXPERIMENT STATION</li> <li>PRISON OR CORRECTIONAL INSTITUTION</li> </ul> <p><b>BOUNDARIES</b></p> <ul style="list-style-type: none"> <li>STATE BOUNDARY</li> <li>COUNTY BOUNDARY</li> <li>INCORPORATED CITY BOUNDARY</li> <li>TOWNSHIP LINE</li> <li>SECTION LINE</li> <li>LAND GRANT LINE</li> <li>WILDLIFE MANAGEMENT AREA</li> <li>NATIONAL OR STATE FOREST BOUNDARY</li> <li>STATE PARK BOUNDARY</li> <li>MILITARY RESERVATION BOUNDARY</li> </ul> <p><b>MISCELLANEOUS</b></p> <ul style="list-style-type: none"> <li>ARMORY</li> <li>ARSENAL</li> <li>CARRIAGE OR RUBBISH DUMP</li> <li>SCRAP METAL JUNKYARD</li> <li>AUTOMOBILE JUNKYARD</li> <li>SEWAGE DISPOSAL PLANT</li> <li>SHOPPING CENTER</li> <li>REST AREA OR WELCOME CENTER</li> <li>TRIANGULATION OR TRAVERSE STATION</li> <li>BENCH MARK WITH ELEVATION</li> <li>DOT INDICATE ACTUAL LOCATION OF FEATURE WHERE SPACE IS NOT AVAILABLE</li> <li>GAME FARM</li> </ul> |
|---|---|--|

COPIES OF THIS MAP ARE AVAILABLE TO THE PUBLIC AT NORMAL COST AT THE CHAMBERS COUNTY HIGHWAY DEPARTMENT ENGINEERS OFFICE P.O. BOX 650 1807 US 431 NORTH LAFAYETTE, AL 36862

DUE TO THE SCALE OF THIS MAP THE ALABAMA DEPARTMENT OF TRANSPORTATION, ITS AFFILIATES, AND CHAMBERS COUNTY ASSUME NO RESPONSIBILITY FOR INACCURACIES IN ROAD ALIGNMENTS, CONFIGURATION OF INTERSECTIONS, AND OTHER RELATED DATA.

CITY, MILITARY AND OTHER RELATED BOUNDARIES ARE PLOTTED USING ALL AVAILABLE DESCRIPTIONS AT DATE OF REVISION. NEITHER THE ALABAMA DEPARTMENT OF TRANSPORTATION NOR CHAMBERS COUNTY CAN ACCEPT RESPONSIBILITY FOR INACCURACIES RESULTING FROM UNOBTAINABLE OR UNKNOWN DATA.

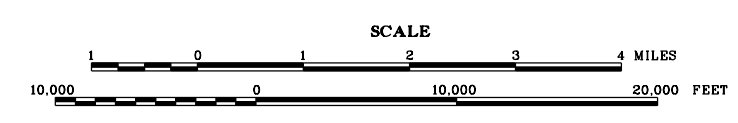
THE ALABAMA DEPARTMENT OF TRANSPORTATION, ITS AFFILIATES, AND CHAMBERS COUNTY DO NOT SPECIFY OWNERSHIP OR MAINTENANCE OF ANY ROADS OR OTHER FEATURES DEPICTED ON THIS MAP.



TM GRID AND 1982 MAGNETIC DECLINATION AT CENTER OF MAP  
 COUNTY POPULATION, 2010 CENSUS.....34,216  
 COUNTY AREA IN SQUARE MILES.....596

# CHAMBERS COUNTY ALABAMA

PREPARED BY THE CHAMBERS COUNTY ENGINEERING OFFICE



2018

